

Door No		Std Arg No	XX
Prod Code	AFL-XX	Rating	30/0,60/0
Type	FL DOOR UNIT		
Location			

GENERAL INFORMATION

The Screen will be manufactured from our ST60 system tested to comply with BS 476 parts 20-23 1987 for 60min integrity. The screen frame comprises of mild steel box sections with 2mm walls (unless stated otherwise) with clip on beads to glazed side wings. The frame is spigot fixed.

LEAF DETAILS

1 No. left hand, 1 No right hand

bright polish/satin stainless steel / PPC

10mm or 12 mm Pyran

Doors manufactured using our Fyrespan FL system, comprising of top and bottom rail, for 30/60 minutes integrity only.

FRAME DETAILS

manufactured from our ST60 system

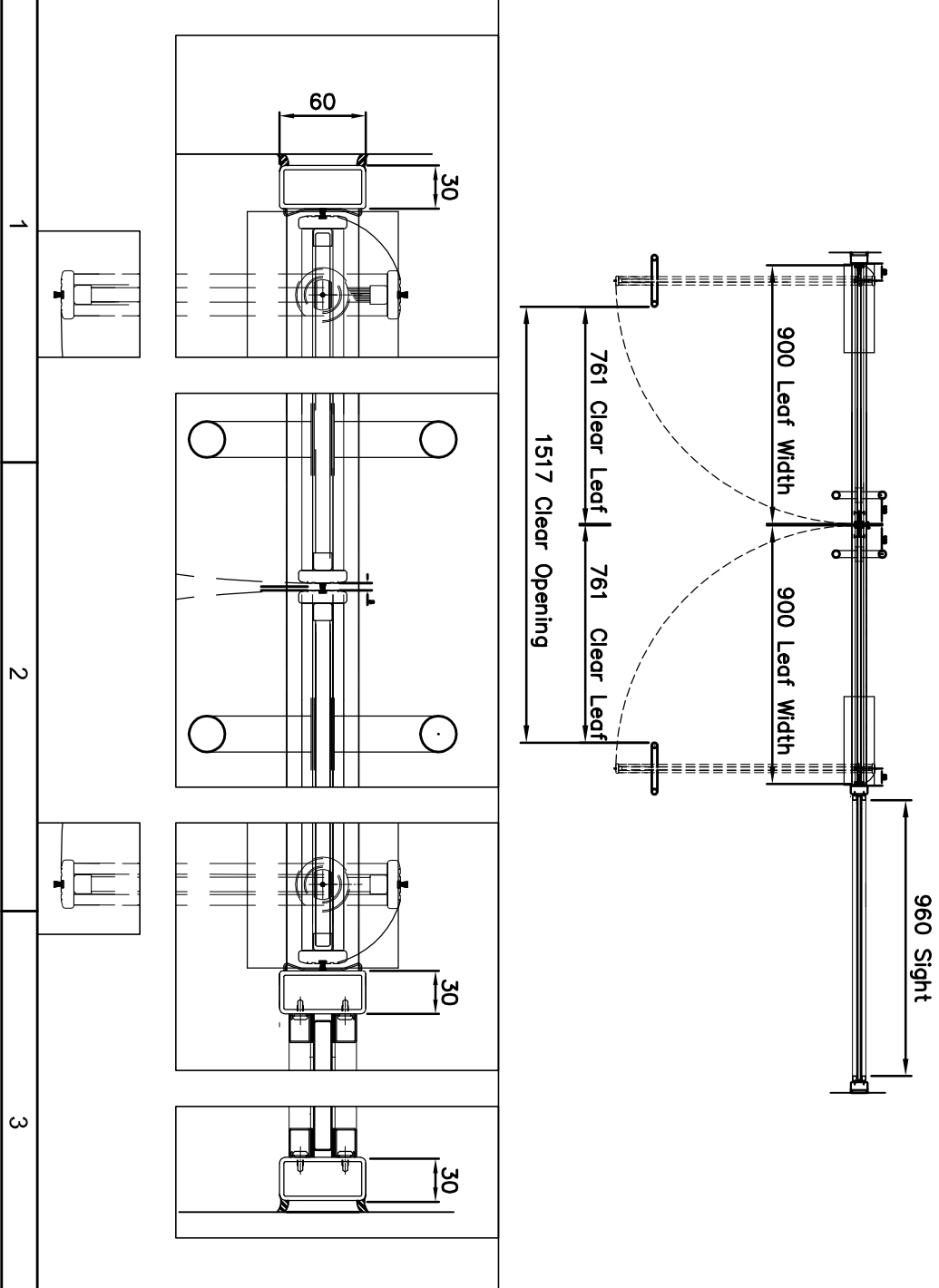
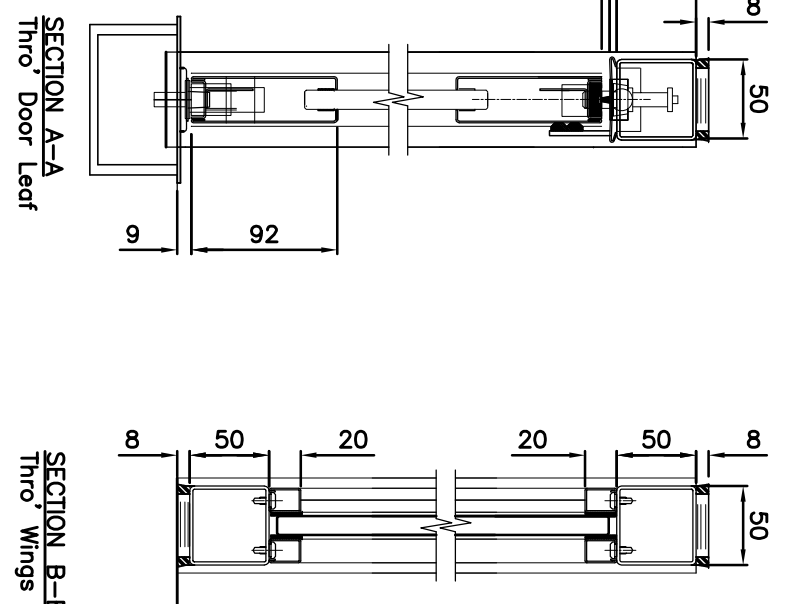
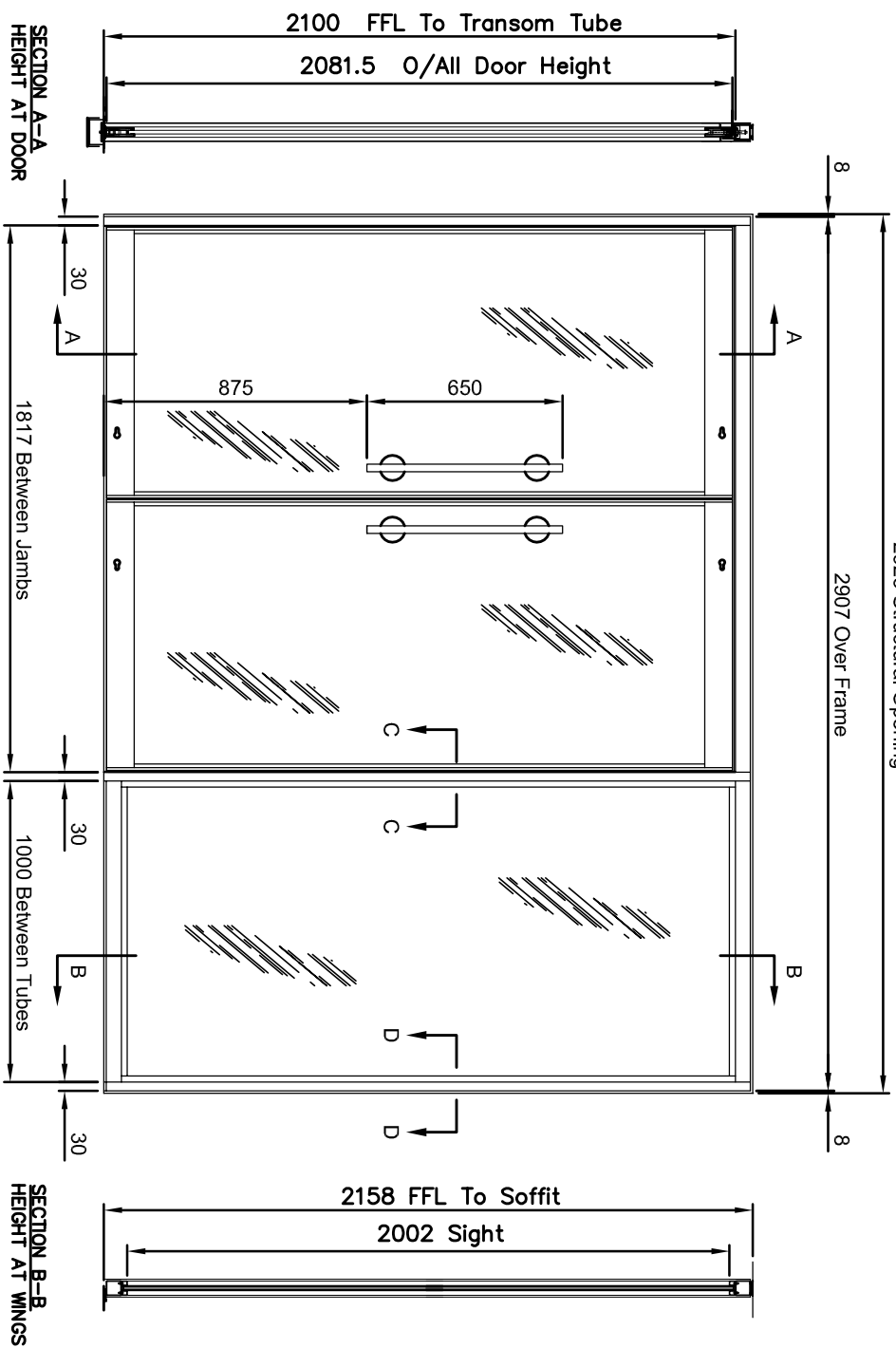
bright polish/satin stainless steel / PPC


varies on condition

Seal

designed if requested and as required

Constructed from 50 x50 and 60 x 30 tubes, mechanically fixed with our standard spigot system.



Customer	X	Project	X
Title	GAAFL 03:1 No. pair with glazed side screen		
Name	As first drawn	Rev	A
Date	Description	Scale	1 : 20
Drawn By	M.C	Checked By	
Date	18.12.08	Date	
Sheet	1 of 1	Issue	A
Drawing No	AFL-03 datasheet		
 <p>hansen steel door specialists email: operations@accenthansen.co.uk Tel: 0161-284 4100 Fax: 0161-655 3119 Manchester M24 1SW Middleton Greengate AccentHansen Limited Greengate Industrial Park</p>			
Paint Finish	standard RAL (metallic available upon request)		
Accent Serial No. -	---		
Ref No	Description	Qty	
	Dorma BTS 75V or BTS 80 floor springs	1	
	Dorma hold open floor springs (optional)		
	Back to back pull handles. design, finish and dimensions variable	1	
	locking options: wilka dealock with euro profile double cylinder concealed maglock surface mounted maglock. (double or single) ably electro magnetic transom mounted locks	2	