



hansen door specialists

Uniclass	EPIC	
L41124:P41	D1124:X412	
CI/SfB		
(31.5)	Xh2	(P2)

AccentHansen

Also available:

SoundShield 40™ (SD1) Doorset MultiShield - CleanShield - FireShield - SwingShield - SecureShield - GlazeShield FL

AccentHansen SoundShield steel sound control doors offer a variety of acoustic performances. Our SoundShield doorsets are quality engineered products with high acoustic properties, carefully disguised in an attractive doorshell. Available in Zintec and Stainless Steel, AccentHansen SoundShield doorsets have been tested to BS 2750: Part 3: 1980, ISO 140/111-1987, with fire rating up to 120 minutes. All AccentHansen Fire Doors have been tested to BS 476: Part 22: 1987 (integrity only). A UKAS accredited laboratory undertakes all tests and assessments.

Door Leaf

Constructed from two skins of 1.2mm thick zinc coated steel to BS EN 10152, folded to form a 46mm thick door leaf. The vertical edges of the two skins are pressed to create a modular Twin Tray Construction with EdgeShield, full height, seam assembly, to increase panel strength and rigidity.

The void between the two skins is filled with a High Density Acoustic Mineral Core material (FibroShield) selected for its insulating and acoustic properties. Reinforcing pads are fitted within the leaf, to suit hardware options.

A deep horizontal channel is located at top and bottom of the leaf, with vertical top-hat stiffeners spot-welded to the inner and outer skins. The void inside the reinforcing members is filled with mineral wool before closing with a capping channel which is applied to the top and bottom to produce the flush edged door leaf. The combination of the deep channels and vertical top-hat stiffeners effectively creates a rigidised door leaf panel for maximum stability.

Captive, floating hinge-mounting plates, further reinforces the hinging edge. The lock mechanism is installed within an inner enclosure, this prevents the possibility of infill materials interfering with the lock mechanism and also facilitates its removal for future maintenance or replacement.

On all double doors, a 'T'-section astragal is fitted to the leading edge of the active leaf with an additional internal astragal fitted to maintain the sealing plane and ensure positive sealing.

Frame

Pressed from 1.6mm thick zinc coated steel to BS EN 10152, to form a single or double rebate profile to BS 1245: 1986, Standard Profiles 'SR:A, DR:G, SR:(X) and DR:(X).

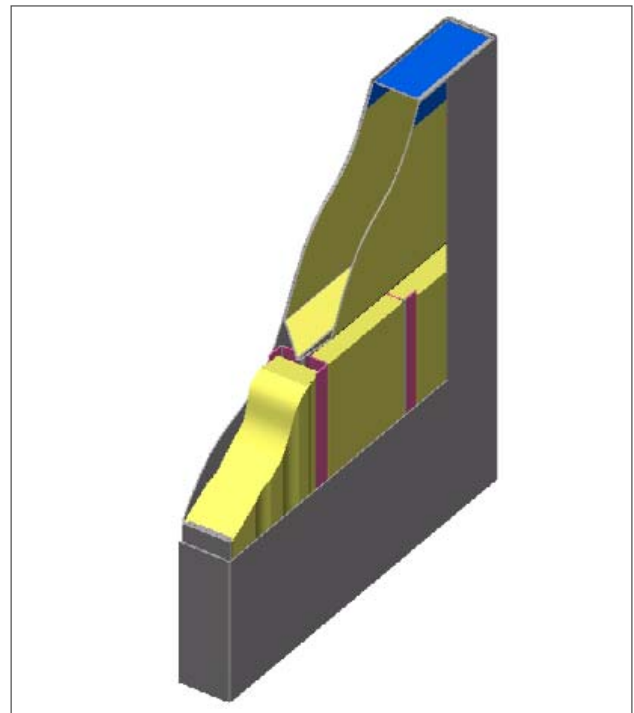
The door frame configuration will be four sided to ensure total acoustic sealing to the perimeter of the assembly:

- Sill members can be supplied as full section or low profile
- Header members are profiled to form a smooth, butt joint with the full height vertical jambs
- Mitred frames or fully welded frames are available as special options
- Cleats are spot welded into the ends of the header to allow bolt-connection to the vertical jambs that are then suitably reinforced at all hinge points

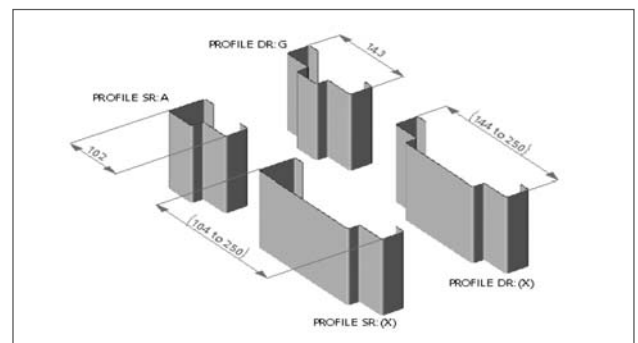
The inside void between the frame and wall is filled with a High Density Acoustic Mineral Core material (FibroShield) selected for its insulating and acoustic properties.

A self-adhesive neoprene acoustic seal is fitted into the door frame perimeter on single doors with an additional seal applied to the centre astragal on double door configurations. This is fitted into the door frame rebate on factory finished doorsets, or supplied for on-site fitting by others on unfinished or factory primed doorsets.

The frame arranged for bolt fixing to a suitable structure, using the TightShield assembly system.



Twin Tray Construction with EdgeShield



Profiles SR: A, SR: G, SR:(X) and DR:(X)

SoundShield Doors - Technical Specification

AccentHansen

AccentHansen Acoustic doors have been tested to BS 2750: Part 3: 1980, ISO 140/111-1978 (Measurement of Sound Insulation in Buildings and of Building Elements)



SoundShield 40™ (SD1) Doorset

Finish

Powder Coated Paint Finish

All AccentHansen doors are finished with a standard APP 120 powder coat finish with a 5 year warranty* and a design life expectancy of 12 years making it one of the most durable finishes on the market.

Our range of Powder Coatings are organic coatings that need to be cleaned and maintained regularly to ensure that the decorative and protective properties of the coating are retained. This paint finish system has been designed to give enhanced corrosion protection of mild steel and has been extensively tested against ISO 9227, GME 60203 and ISO 12944 and can be supplied to any standard BS 4800 or RAL reference number.

Note: colours which are only available in a metallic finish will incur an additional surcharge.

* Doors which are fitted in a marine or coastal area could require the standard specification to be upgraded. This will also have an effect on the warranty of our products.

Transom Panels

The transom panel is constructed similar to the door leaf thus maintaining identical levels of acoustic attenuation. Full perimeter seals will be applied between the transom panel and adjoining frame.

Transom panels can be supplied in the following configurations:

- Factory fixed and sealed to be an intrinsic part of the frame assembly
- Fully detachable for on-site removal in high maintenance areas. Supplied with self adhesive neoprene acoustic seals, to the following variants:
 - a) Internally fixed with a visible angle frame and self-tapping screws
 - b) Externally fixed with AccentHansens' high load steel peg and steel rack bolt system

Transom panels incorporate a transom rail pressed from 2.5mm thick Zintec coated steel to BS EN 10152, to form the special Double Egress SR:(SS55) frame profile. This rail is supplied either fixed or removable on the internal, secure side of the building.

Useful Data

Table of Useful Data for General purpose twin tray construction doors	
Leaf Weight per m2 (kg)	32.21
Frame Weight per linear metre for single rebate profile SR:A (kg)	4.70
Frame Weight per linear metre for double rebate profile DR:G (kg)	5.71
U Value (W/m2.K)	0.6771

Weights shown are an assessed average value. For specific leaf weight calculation contact AccentHansen Technical Advisory Service.

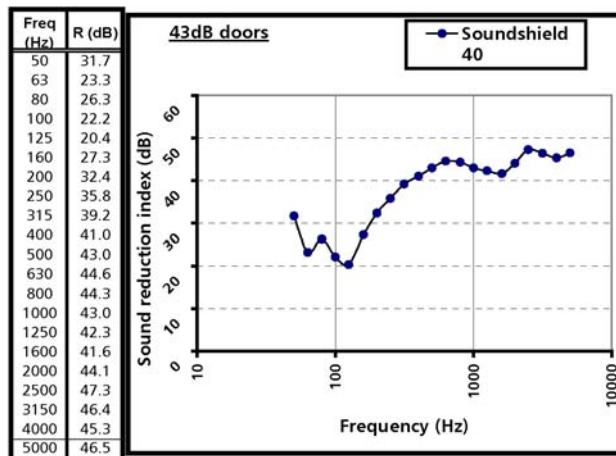
Evidence of Performance

AccentHansen acoustic doors have been tested at Salford University Department of Acoustics to BS 2750:Part 3: 1980 ISO 140/III-1978. - Measurement of sound insulation in buildings and of building elements.

Extract from test document: Report No. AT/95/53: Test date 8th November 1995 AccentHansen product reference: SoundShield40

ISO 717: Rw = 43dB Max. dev 6.6dB @ 125Hz
Av SRI, Rave (100hz - 3150hz) = 38.4dB
Weighted Sound Reduction Index Rw = 43dB
Sound Transmission Class STC = 43dB

Information on door type tested
Leaf configuration code: F
Frame Elevation: 4S
Door size tested 2115mm high x 1000mm wide



SoundShield Doors - Technical Specification

To speak to our Technical Advisory Service call 0845 070 5224.

AccentHansen

AccentHansen Limited
Greengate Industrial Park, Greenside Way
Middleton M24 1SW UNITED KINGDOM
Tel: +44 (0) 161 284 4100 Fax: +44 (0) 161 655 3119
E-mail: sales@accenthansen.co.uk
Web: www.accenthansen.co.uk

AccentHansen is part of the Hansen Group

For more information on the Hansen Group:
Email: info@hansengroup.co.uk
Web: www.hansengroup.biz

AccentHansen Ltd reserves the right to improve, update, and modify products and services without prior notice.

Datasheet No: SS40_0709.7



Approved to ISO 9001:2008